



4-6 m Mounting
Height

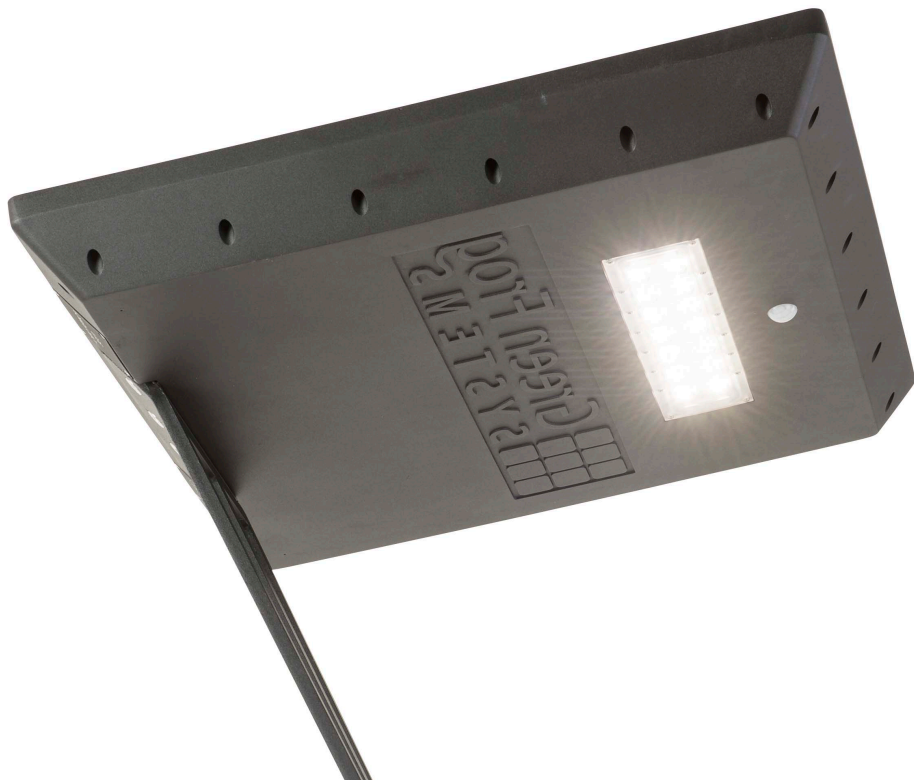
15W
2805 Lm

5 Year Warranty

Stealth

Solar Series





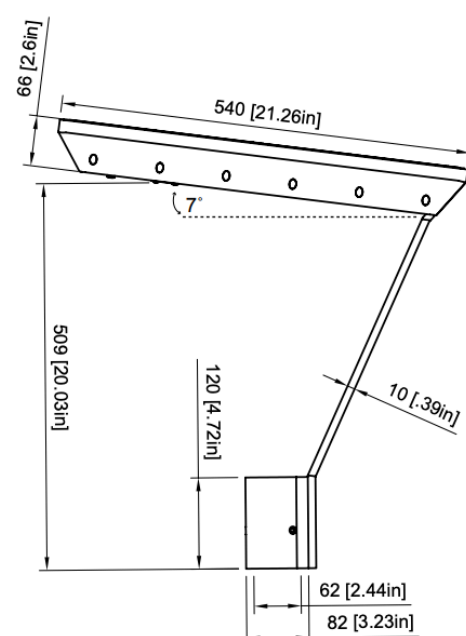
The new GFS Stealth challenges traditional aesthetics to provide a contemporary off-grid lighting solution.* The design means that it doesn't visually identify as a solar lighting product at all, yet offers unparalleled illumination. At 6X more powerful than conventional lighting it is without doubt the most architecturally designed solar light on the market.

Features

- **LED:** CREE 15W full power / 7.5W all night
- **OPERATION:** 15W full power / 7.5W all night
- **RESISTANCE:** IK10 LED lenses and impact resistant tempered glass solar panel
- **CONTROLLER:** MPPT solar charge controller with programmable ON / OFF setting (dusk to dawn)
- **BATTERIES:** 12.8v 32Ah (409.6Wh) LiFePo4 battery with inbuilt BMS
- **SOLAR PANEL:** 50W USA made n-mono-crystalline solar panel with class leading 24% solar cell efficiency
- **SAM SYSTEM:** Remotely monitor and control your SAM using easy to use, cloud hosted dashboards.

Benefits

- An "off-grid" solution, negating the need for extensive civil works or costly connection to the main grid.
- No running costs
- Zero maintenance system
- Self adjusting light levels
- Elegant design for suburban areas
- Flexible mounting options



Stealth

Solar Series



LED

14 x CREE XP-G LED configured in 2 × 7 LED arrangement

2,805lm boost mode / 1,402lm all night operation (depending on dimmer setting)

4000K CCT, 70 CRI 187lm/W

Dual LED drivers Bank 1 - (7 x LED 1402 lm) (low mode with dimming control 1-7.5W) Bank 2 - (7 x LED 1402 lm) motion sensor triggers boost mode - full power 15W for 30 seconds / until motion is no longer detected

LENS

IK10 polycarbonate lens for an evenly distributed light pattern • Type 3 (standard) - bat wing (pathway) lens 135° x 85° • Type 5 (optional) - spherical (round) lens 110° x 135°

SOLAR PANEL

50W USA made n-mono-crystalline panel with 24% cell efficiency

Advanced edgeless frame design at 7° angle prevents build up of dirt and bird fouling

Optimum power at any solar orientation due to advanced cell and controller technology

BATTERY

GFS designed Advanced Cell Technology (ACT) - LiFePO4 battery

12.8v / 32Ah (409.6Wh) providing 4.5 nights backup power**

54 hours continuous light output in all night mode (1,402 lm)

Integrated Battery Management System (BMS) featuring short circuit, over-temperature, over-charge/discharge and over-current protection

SMART CONTROLLER

Monitors system vitals including LED /solar / battery and temperature

Adjustable dimmer settings to prolong light output in partially shaded environments or reduce light output in sensitive areas

MPPT (maximum power point tracking) charging with 99% tracking efficiency

IOT Smart city ready using GFS-SAM monitoring system

Real time clock for precise ON / OFF times

Custom multiple ON / OFF options per night with ability to set ON hours, before sunrise

MOTION SENSOR

PIR passive infrared with repeat trigger feature (stays on full power for 30 seconds longer than the heat source or movement is detected)

Reduces false triggering (trees, high winds and small rodents)

360° detection range from 6m / 20FT on 6m pole / 20FT on 20FT pole*

Boost mode ON time once triggered - 30 seconds after motion finishes

UNIT WARRANTY

Solar Panel	25 Years
Mounting Bracket	5 Years
LED Light Fixture	5 Years
Electronics	5 Years
Battery Defect Warranty	10 Years*
Full warranty details available at greenfrogsystems.com.au/warranty	

CERTIFICATIONS

ISO 9001:2015 QUALITY ASSURED COMPANY

ASNZS 1158.3.1 Pedestrian area (Category P) lighting

Product and component certifications listed UL E349212 LED, UL3135 Cabling, UL1598 Safety Luminaires, UL8750 LED Safety

Certified to meet ANSI/IES RP-8-14 and ANSI/IES RP-20-14 lighting standards

SAIL AREA / EPA - COMPLETE SYSTEM

0.1146 m2 / 1.2333 FT2

STANDARD MOUNTING HEIGHT

LED 6m / 19.68FT above grade

PACKAGE WEIGHT

Boxed Stealth: 21.25 kg / 48.8 lb

Pole Mount Bracket (PMB): 5.65 kg / 12.5 lb

Wall Mount Bracket (WMB): 6 kg / 13.2 lb

Spigot Pole: 20.15 kg / 44.4 lb (top + bottom)

OPERATING TEMPERATURE

-20°C to 70°C / -4°F to 158°F

Stealth

Solar Series

